

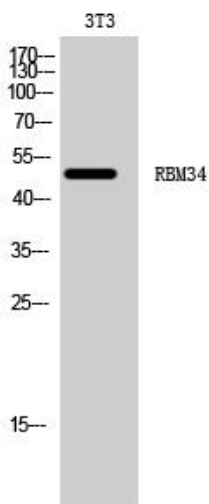


RBM34 Polyclonal Antibody

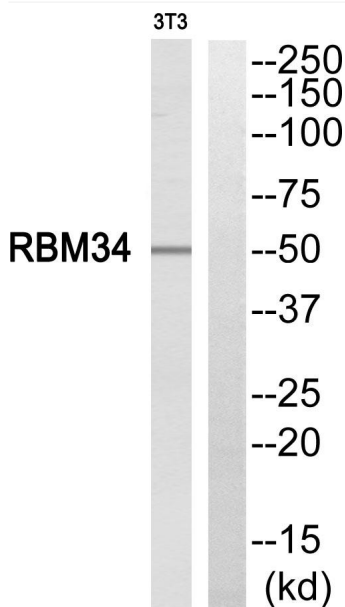
Catalog No	YP-Ab-01970
Isotype	IgG
Reactivity	Human;Mouse;Rat
Applications	WB;IHC;IF;ELISA
Gene Name	RBM34
Protein Name	RNA-binding protein 34
Immunogen	The antiserum was produced against synthesized peptide derived from human RBM34. AA range:345-394
Specificity	RBM34 Polyclonal Antibody detects endogenous levels of RBM34 protein.
Formulation	Liquid in PBS containing 50% glycerol, 0.5% BSA and 0.02% sodium azide.
Source	Polyclonal, Rabbit,IgG
Purification	The antibody was affinity-purified from rabbit antiserum by affinity-chromatography using epitope-specific immunogen.
Dilution	WB: 1/500 - 1/2000. IHC: 1/100 - 1/300. ELISA: 1/20000.. IF 1:50-200
Concentration	1 mg/ml
Purity	≥90%
Storage Stability	-20°C/1 year
Synonyms	RBM34; KIAA0117; RNA-binding protein 34; RNA-binding motif protein 34
Observed Band	50kD
Cell Pathway	Nucleus, nucleolus .
Tissue Specificity	Bone marrow,Epithelium,Lung,Testis,
Function	PTM:Phosphorylated upon DNA damage, probably by ATM or ATR.,similarity:Belongs to the RRM RBM34 family.,similarity:Contains 2 RRM (RNA recognition motif) domains.,
Background	PTM:Phosphorylated upon DNA damage, probably by ATM or ATR.,similarity:Belongs to the RRM RBM34 family.,similarity:Contains 2 RRM (RNA recognition motif) domains.,
matters needing attention	Avoid repeated freezing and thawing!
Usage suggestions	This product can be used in immunological reaction related experiments. For more information, please consult technical personnel.



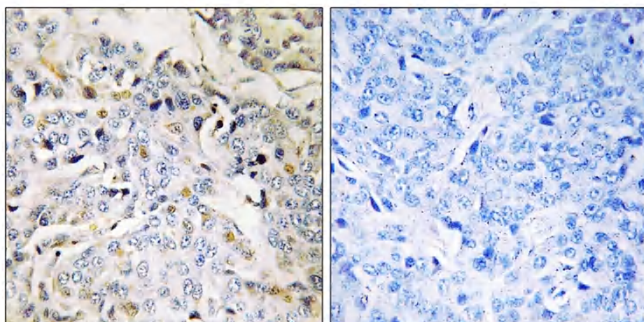
Products Images



Western Blot analysis of 3T3 cells using RBM34 Polyclonal Antibody cells nucleus extracted by Minute TM Cytoplasmic and Nuclear Fractionation kit (SC-003, Inventbiotech, MN, USA).



Western blot analysis of RBM34 Antibody. The lane on the right is blocked with the RBM34 peptide.



Immunohistochemistry analysis of paraffin-embedded human breast carcinoma tissue, using RBM34 Antibody. The picture on the right is blocked with the synthesized peptide.